



AEROFLEX®

EPDM Tube Insulation



AEROFLEX EPDM™ Continuous Tube & Coil Pack

Standard EPDM Tube Insulation





AEROFLEX EPDM™ Continuous Tube & Coil Pack

Standard EPDM Tube Insulation

HVAC | VRF | Refrigeration | Linesets
OEM | Hoses | Plumbing

Closed-cell continuous tube insulation for rapid, slide-on installation on longer lengths of copper tube and other piping. Ideal for applications that involve long lengths of tubing such as HVAC linesets and VRF/VRV systems.

Meets minimum pipe insulation thickness and minimum R-value requirement of the International Energy Conservation Code® (IECC®) and ASHRAE 90.1. Energy Standard. To meet minimum R-value, insulation thickness may increase above the minimum thickness per IECC and 90.1. See back cover.

Continuous tubes available in ID's ranging from 1/4" - 2-5/8", wall thicknesses from 1/4" - 1-1/2", with or without asbestos-free talc. See back cover.

Fast, simple to install

Slides easily over new piping

Can be slit, snapped and glued over existing piping

Built-in vapor retarder - No supplemental vapor retarder required for most applications*

Superior environmental stability

Nonpolar - does not induce or react with water

Greater UV resistance than NBR/PVC insulation

Non-corrosive on stainless steel and copper piping

Suitable for interior and exterior applications**

Safe for indoor environments

Superior fire safety - 25/50 rated (ASTM E84, UL723, CAN/ULC-S102) and self-extinguishing (ASTM D635)

GREENGUARD Gold Certified for low chemical emissions

Does not contain asbestos, fibers, formaldehyde, lead, mercury, mercury compound, or nitrosamine

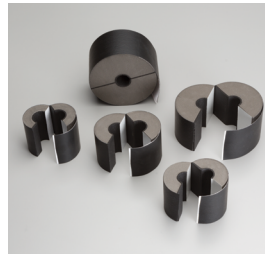
Compliant with EPA TSCA - does not contain PFAS, PBT, and POP chemicals

Naturally mold-resistant: no biocides required

Ultra-low PVC content - less than 1%



AEROFLEX EPDM™ insulation system solutions



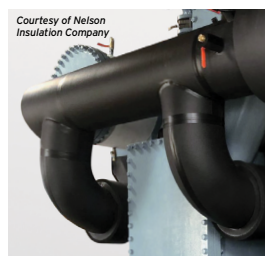
Aerofix®

Light-weight, rigid pipe supports, pre-insulated with high-density, load-bearing closed-cell foam and encased with zero-perm EPDM polymer membrane. Includes built-in pressure sensitive Protape® closure system.



AeroFit™

Pre-fabricated insulation fittings made of AEROFLEX EPDM™ rubber for high-quality installation on HVAC and plumbing piping.



Protape®

Zero-perm EPDM-based, self-adhering rubber tape for sealing glued insulation seams and termination points.



AEROFLEX® Adhesives

Specially formulated adhesives for bonding and vapor-sealing AEROFLEX EPDM™ insulation. Fast tack and LVOC formulations available.

*Supplemental vapor barrier may be required in extreme low-temperature or high-humidity applications. Protective jacket required for direct-bury applications and if insulation may be subjected to mechanical damage.

**For exterior applications, Aerocoat®, Aerocoat LVOC®, or an insulation jacket are recommended for UV protection to maximize the insulation's life cycle.

Product: Closed-cell EPDM (Ethylene Propylene Diene Monomer)-based rubber elastomeric foam pipe insulation for HVAC (VRF, chilled water & refrigeration) and plumbing piping.

Standard Specification: ASTM C534 Type I Grade 1

**Installation
Instructions:**



Thermal Conductivity (K) Btu-in/hr-Ft² -°F (W/m.K)

Mean Temperature	K Value	Test Method
50°F (10°C)	0.237 (0.0342)	ASTM C177/C518
75°F (24°C)	0.245 (0.0353)	
100°F (38°C)	0.252 (0.0363)	
125°F (52°C)	0.260 (0.0375)	
150°F (66°C)	0.267 (0.0385)	
200°F (93°C)	0.282 (0.0406)	
250°F (121°C)	0.315 (0.0454)	

Physical and Operational Properties

Property	Test Value/Rating	Test Method
Service Temperature, CONTINUOUS ^{1,2}	-297°F to 257°F -183°C to 125°C	ASTM C411 ¹
UV Resistance	Minimal cracking or color change	ASTM G7
Ozone Resistance	No cracking	ASTM D1171
Water Vapor Permeability, Max	0.02 perm-inch (4.38 x 10 ⁻¹¹ g/Pa.s.m)	ASTM E96
Water Absorption (% by Volume), Max	0.2%	ASTM C209/C1763
Surface Burning/Flammability (through 2" thick)	Pass	UL94 V-0
	25/50	ASTM E84, UL723, CAN/ULC-S102
	Pass	NFPA 90A/90B
	Self-extinguishing	ASTM D635
VOC Emissions	< 0.5 mg/m3	CDPH Standard Method v1.2
Corrosion of Stainless Steel	Non-corrosive	ASTM C692, DIN 1988
Fungi Resistance	No Growth	ASTM C1338/G21
Mold Resistance	No Growth	UL181
Density	3.0-6.0 lbs/ft3	ASTM D1622
Linear Shrinkage	< 7.0%	ASTM C534

¹ AEROFLEX EPDM™ flexibility begins to decrease at -70°F and below. This does not impact the insulating properties of the material.

² Approved for intermittent operating temperatures to 300°F / 150°C for up to 30 minutes within a 24-hour period.

Additional Approvals, Certifications & Compliance

ASTM D1056, 2C1	Standard Specification for Flexible Cellular Materials–Sponge or Expanded Rubber
ANSI/ASHRAE/ICC/USGBC/IES Standard 189.1	International Green Construction Code® (igCC®)
ANSI/ASHRAE/IES Standard 90.1	Energy Standard for Buildings Except Low-Rise Residential Buildings
BABA	Build America, Buy America Act
Buy American	Buy American, Federal Acquisition Regulation, FAR 52.225 Buy American
CA Title 24	VOC Emissions, Standard Method v1.2
California Specification 01350	California Department of Public Health (VOC Emissions)
EPA	Toxic Substances Control Act (TSCA) Persistent, Bioaccumulative, and Toxic (PBT) Chemicals, Per- and Polyfluoralkyl Substances (PFAS), Persistent Organic Pollutants (POP)
IECC®	International Energy Conservation Code®
LEED®	U.S. Green Building Council - Leadership in Energy and Environmental Design
MEA #171-04-M	City of New York Material and Acceptance Pipe Insulation
Montreal Protocol	Manufactured without CFC and HCFC ozone-depleting blowing agents
REACH	European Chemicals Agency (ECHA) - Registration, Evaluation, Authorization and Restriction of Chemicals
RoHS	European Union - Restriction of Hazardous Substances

Potential LEED® Credit Contributions

Energy & Atmosphere (EA)	Prerequisite: Minimum Energy Performance Credit: Optimize Energy Performance
Indoor Environmental Quality (EQ)	Credit: Low-Emitting Materials Credit: Indoor Air Quality Assessment Credit: Thermal Comfort Credit: Acoustic Performance
Innovation (IN)	Credit: Occupant Comfort Survey





AEROFLEX EPDM™ Continuous Tube & Coil Pack R-Values (75°F / 24°C mean temperature)

Pipe Size (inches)	IPS (inches)	Wall Thickness (inches)					
		1/4	3/8	1/2	3/4	1	1-1/2
1/4		2.1	3.0	4.0	6.7	10.1	
3/8	1/8	1.9	2.7	3.6	6.1	9.1	
1/2	1/4	1.8	2.5	3.3	5.6	8.3	14.1
5/8	3/8	1.7	2.4	3.2	5.2	8.1	13.4
3/4		1.7	2.3	3.0	5.0	7.7	12.8
7/8	1/2	1.6	2.3	3.2	5.3	7.4	12.9
1-1/8	3/4	1.6	2.2	3.0	5.0	7.0	
1-3/8	1	1.5	2.1	3.1			
1-5/8	1-1/4		2.3	3.0	4.9		
2-1/8				3.0			
2-5/8						5.7	

NOTE:

The International Energy Conservation Code® (IECC®) and ASHRAE 90.1. Energy Standard require pipe insulation to meet either a minimum thickness or as an option minimum R-value (not both). Minimum thickness or R-value is determined by the authority having jurisdiction (federal, state, or local).

To meet minimum R-value, insulation thickness may increase above the minimum thickness specified by IECC and 90.1.

AEROFLEX EPDM™ pipe insulation thicknesses and R-values meet the minimum requirements of International Energy Conservation Code (IECC) and ASHRAE 90.1. Energy Standard.

Click [here](#) to learn more.