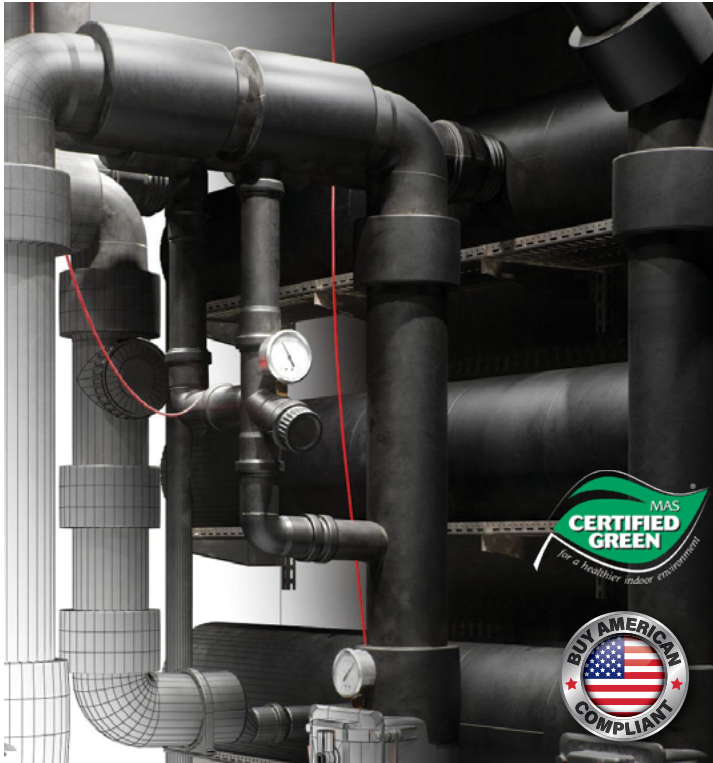




AEROFLEX®

Low-VOC Special Purpose Contact Adhesive



Aeroseal LVOC™ Black

Professional Grade Low-VOC Contact Adhesive





Aeroseal LVOC™ Black

Low-VOC Contact Adhesive
Best choice for LEED® and Living Building
Challenge (LBC) projects

HVAC | Refrigeration | VRF | Chilled Water
Duct Liner | Ductwrap | Hot & Cold-Water Piping

Aeroseal LVOC Black is a low-VOC special purpose
contact adhesive specially formulated for bonding
adjoining seams of AEROFLEX EPDM™ insulation
and suitable substrates.

Colors: Black

Sizes: Gallon, pint (brush-top).

Fast, simple to install

Tack times of 3-5 minutes (depending on ambient conditions)

Instantly bonds once dry to the touch

Tapes and coatings can be applied immediately after installation

Superior performance

Strong tenacious bonds

High water vapor resistance

Properly sealed seams minimize likelihood of corrosion under
insulation (CUI)

Safe for indoor environments

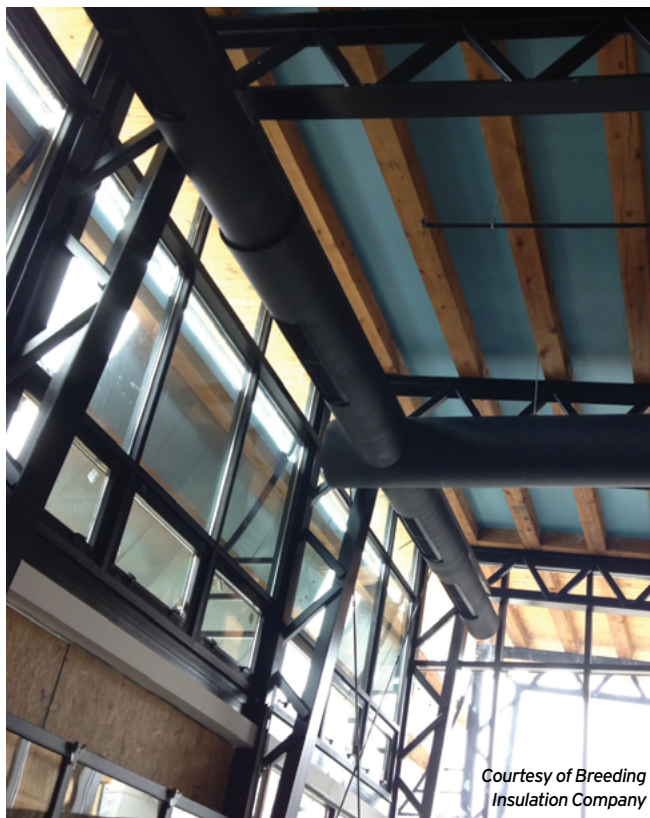
Low-VOC content and emissions

MAS Certified Green® for low chemical emissions

Complies with LEED® content and emission requirements for
interior-applied and exterior-applied adhesives

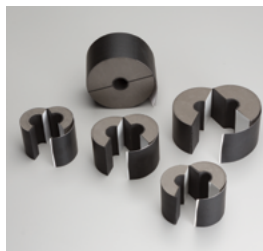
Environmental Product Declarations (EPD)

LBC Red List-compliant



Courtesy of Breeding
Insulation Company

AEROFLEX EPDM™ insulation system solutions



Aerofix®

Light-weight, rigid pipe supports,
pre-insulated with high-density,
load-bearing closed-cell foam and
encased with zero-perm EPDM
polymer membrane. Includes
built-in pressure sensitive
Protape® closure system.



Courtesy of Nelson
Insulation Company

Protape®

Zero-perm, EPDM-based, self-
adhering rubber tape for sealing
adjoining seams and termination
points.



Aerocoat®

A premium specialty coating for
exterior weather protection and
as a decorative finish.



Aerocoat LVOC®

A low-VOC UV protective
coating, best choice for LEED®
and LBC projects.

Product: Synthetic rubber-based contact adhesive for bonding AEROFLEX EPDM™ insulation to itself and to clean suitable substrates such as metal.

**Installation
Instructions:**



Application: Stir contents thoroughly before use. Do not thin. Apply thin even coat to both clean and dry surfaces with short-bristle brush or adhesive roller. Allow short tack time (3-5 minutes or more depending on ambient conditions) until dry to the touch (no transfer) before applying both glued surfaces together. The bond is immediate with no adjustability. Moderate pressure should be applied over the entire area to ensure complete contact and a vapor seal. Aeroseal LVOC should be applied when ambient and surface temperatures are above 40°F (4°C) and below 100°F (38°C). Do not allow to freeze.

If adhesive was dry to the touch prior to contact, glued seams may be covered with Protape® and full-coverage applications may be coated with Aerocoat® or Aerocoat LVOC® immediately after installation.

Read all warnings on product label before use.

Clean Up: Use acetone to clean adhesive residue from tools.

Physical Properties

Composition (Black)	Synthetic rubber base with added resins and fillers
Solids Content	Approximately 26% by weight
Net Weight	7.0 lbs/gal
VOC	Content < 50 g/L, Emissions < 0.5 mg/m3
Red List Chemicals	Zero
Service Temperature Range ¹	-20°F to 257°F (piping), 180°F (sheets & rolls) -28°C to 125°C (piping), 82°C (sheets & rolls)
Surface Buring/Flammability	< 25/50 (ASTM E84)
Tack Time	3-5 minutes (dry to touch, no transfer)
Dry Time	Immediate (upon contact)
Coverage	Up to 200 ft2/gal
Storage	60°F to 80°F (16°C to 27°C), protect from freezing
Shelf Life	1 year (date of purchase)

¹ Approved for intermittent operating temperatures to 300°F / 150°C for up to 30 minutes within a 24-hour period.

Additional Approvals, Compliances, Etc.

BABA	Build America, Buy America Act
Buy American	Buy American, Federal Acquisition Regulation, FAR 52.225 Buy American
California Specification 01350	VOC Emissions, Standard Method v1.2
SCAQMD Rule 1168	Low-Emitting Materials, VOC Content, Adhesives and Sealants
Materials Red List	International Living Future Institute (ILFI) Living Building Challenge (LBC) standard

Potential LEED® Credit Contributions

Indoor Environmental Quality (EQ)	Credit: Low-Emitting Materials, Interior and Exterior-Applied Adhesives
Materials & Resources (MR)	Credit: Building Product Disclosure and Optimization - Environmental Product Declarations (EPD), Product Specific Type III



232 Industrial Park Road Sweetwater, TN 37874

866.237.6235

www.aeroflexusa.com

082225