



AEROFLEX®

Insulated Pipe Supports



Aerofix®

Insulated Pipe Supports





Aerofix[®]

Insulated Pipe Supports

HVAC | Refrigeration | VRF | Chilled Water
Hot and Cold-Water Piping

Aerofix[®] patented insulated pipe supports are high-strength, load-bearing, closed-cell insulation fittings. Will not compress or crush under loads imposed by active piping systems at pipe hanger and strut clamp locations. Composed of rigid closed-cell, lightweight, polymeric foam and lined with closed-cell EPDM rubber. Aerofix is encased in a zero-perm, weather-proof, corrosion-proof EPDM polymer membrane with a high-performance pressure-sensitive closure system.

Hermetically seals piping against vapor drive. Prevents thermal bridging and the potential for corrosion under insulation (CUI) when installed with AEROFLEX EPDM[™] closed-cell elastomeric pipe insulation, adhesives and zero-perm Protape[®].

Wide range of ID's (1/4" - 12" IPS) and thicknesses (1/2" - 2"). See back cover.

Superior performance

Zero-perm

Hermetic system prevents thermal bridging and corrosion under insulation (CUI)

Non-compressible structure maintains thermal efficiency

Wide service temperature range: -328°F to 257°F (-200°C to 125°C)

Non-corrosive on stainless steel piping

Safe for indoor environments

Suitable for interior and exterior applications

Self-extinguishing (ASTM D 635)

No CFC's, HFC's, HCFC's, PBDE's, nitrosamine or fibers

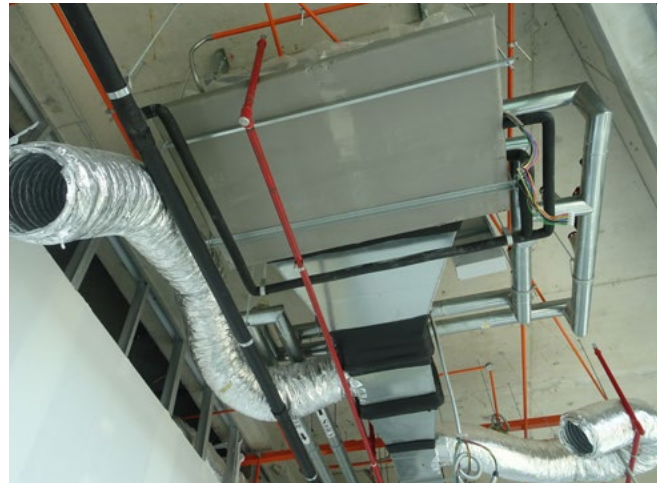
Indoor Advantage[™] Gold Certified for low chemical emissions

Verified Environmental Product Declarations (EPD's) and Health

Product Declarations (HPD's)

Naturally mold-resistant; no added biocides required

Ultra-low PVC content – less than 1%

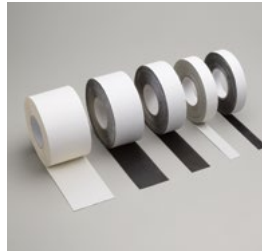


AEROFLEX EPDM[™] insulation system solutions



AEROFLEX[®] Adhesives

Specially formulated adhesives for bonding and vapor-sealing AEROFLEX EPDM[™] insulation. Fast tack and LVOC formulations available.



Protape[®]

Zero-perm EPDM-based, self-adhering rubber tape for sealing glued insulation seams and termination points.



AeroFit[™]

Pre-fabricated fitting covers made of AEROFLEX EPDM[™] rubber for high-quality installation on HVAC and plumbing piping.



Aerocoat[™]

Premium insulation coating specially formulated for AEROFLEX EPDM[™] insulation to provide UV protection for exterior applications and as a decorative finish.

Fast, simple to install

Ready to install with common pipe hanger types such as trapeze (strut), split-ring, clevis, roller, clamp and strap hangers

Saves labor versus field-applied support methods

Self-sealing and ready for bonding to AEROFLEX EPDM[™] closed-cell elastomeric insulation tubes using Aerocel adhesives and Protape[®]

Product: Insulated pipe supports for HVAC, refrigeration, VRF, chilled water and hot/cold water piping systems.

Installation Instructions:



Physical and Operational Properties

Physical and Operational Properties	Diameter			Test Method
	Up to 3"	4" to 9"	10" and up	
Density (Lbs./ft ³)	10-14	14-17	17-19	
Thermal conductivity @75°F mean temp, Max (BTU.in/hr.Ft ² .°F)	0.277	0.312	0.347	ASTM C518
Water Absorption (% by weight), Max	7%	5%	3%	ASTM D1056
Compressive Strength at yield (PSI), Min	227	341	512	ASTM D1621
Surface Burning/Flammability (through 2" thick)	Self-Extinguishing			ASTM D635
Service temperature, CONTINUOUS	-328°F to 257°F -200°C to 125°C			ASTM C411 ¹
Water vapor permeability (Perm-inch) (EPDM polymer membrane)	0.00			ASTM E96
VOC Emissions	< 0.5 mg/m ³			CDPH Standard Method v1.2

¹ AEROFLEX EPDM™ flexibility begins to decrease at -70°F and below. This does not impact the insulating properties of the material.

Additional Approvals, Certifications & Compliance

ANSI/ASHRAE/ICC/USGBC/IES Standard 189.1	International Green Construction Code® (igCC®)
ANSI/ASHRAE/IES Standard 90.1	Energy Standard for Buildings Except Low-Rise Residential Buildings
CA Title 24	International Energy Conservation Code®
California Specification 01350	VOC Emissions, Standard Method v1.2
EPA TSCA Section 6(h)	Toxic Substances Control Act Persistent, Bioaccumulative, and Toxic (PBT) Chemicals
IECC®	International Energy Conservation Code®
LEED®	U.S. Green Building Council - Leadership in Energy and Environmental Design
MEA #171-04-M	City of New York Material and Acceptance Pipe Insulation
REACH	European Chemicals Agency (ECHA) - Registration, Evaluation, Authorization and Restriction of Chemicals
RoHS	European Union - Restriction of Hazardous Substances

Potential LEED® Credit Contributions

Energy & Atmosphere (EA)	Prerequisite: Minimum Energy Performance Credit: Optimize Energy Performance
Materials & Resources (MR)	Credit: Building Product Disclosure and Optimization - Environmental Product Declarations (EPD), Product Specific Type III Credit: Building Product Disclosure and Optimization - Material Ingredients, verified HPD
Indoor Environmental Quality (EQ)	Credit: Low-Emitting Materials Credit: Indoor Air Quality Assessment Credit: Thermal Comfort Credit: Acoustic Performance
Innovation (IN)	Credit: Occupant Comfort Survey





Nominal 1/2" Wall				Nominal 3/4" Wall				Nominal 1" Wall			
Aerofix ID (inches)	IPS (inches)	Length (inches)	Aerofix OD (inches)	Aerofix ID (inches)	IPS (inches)	Length (inches)	Aerofix OD (inches)	Aerofix ID (inches)	IPS (inches)	Length (inches)	Aerofix OD (inches)
1/4	-	3	1.250	1/4	-	3	1.770	1/4	-	3	2.322
3/8	-	3	1.441	3/8	-	3	1.870	3/8	-	3	2.462
1/2	1/8	3	1.498	1/2	1/8	3	2.009	1/2	1/8	3	2.608
5/8	1/4	3	1.629	5/8	1/4	3	2.116	5/8	1/4	3	2.764
3/4	3/8	3	1.757	3/4	3/8	3	2.311	3/4	3/8	3	2.908
7/8	1/2	3	1.860	7/8	1/2	3	2.406	7/8	1/2	3	2.930
1-1/8	3/4	3	2.297	1-1/8	3/4	3	2.627	1-1/8	3/4	3	3.252
1-3/8	1	3	2.487	1-3/8	1	3	3.012	1-3/8	1	3	3.473
1-5/8	1-1/4	3	2.818	1-5/8	1-1/4	3	3.393	1-5/8	1-1/4	3	3.740
1-7/8	1-1/2	3	2.980	1-7/8	1-1/2	3	3.648	1-7/8	1-1/2	3	4.080
2-1/8	-	3	3.252	2-1/8	-	3	3.824	2-1/8	-	3	4.168
2-3/8	2	3	3.682	2-3/8	2	3	3.990	2-3/8	2	3	4.628
2-5/8	-	4	3.862	2-5/8	-	4	4.355	2-5/8	-	4	4.792
2-7/8	2-1/2	4	4.134	2-7/8	2-1/2	4	4.525	2-7/8	2-1/2	4	5.106
3-1/8	-	4	4.414	3-1/8	-	4	4.817	3-1/8	-	4	5.264
3-1/2	3	4	4.780	3-1/2	3	4	5.266	3-1/2	3	4	5.714
3-5/8	-	4	4.746	3-5/8	-	4	5.236	3-5/8	-	4	5.856
4-1/8	3-1/2	4	5.214	4-1/8	3-1/2	4	5.936	4-1/8	3-1/2	4	6.184
4-1/2	4	4	5.682	4-1/2	4	4	6.152	4-1/2	4	4	6.566
5-1/2	5	4	6.821	5-1/2	5	4	7.302	5-1/2	5	4	7.778
6-5/8	6	4	7.654	6-5/8	6	4	8.357	6-5/8	6	4	8.822
8-5/8	8	4	9.784	8-5/8	8	4	10.326	8-5/8	8	4	10.710
10-3/4	10	4	11.825	10-3/4	10	4	12.412	10-3/4	10	4	12.750
								12-3/4	12	4	15.035

Nominal 1-1/2" Wall			
Aerofix ID (inches)	IPS (inches)	Length (inches)	Aerofix OD (inches)
1/4	-	3	3.470
3/8	-	3	3.648
1/2	1/8	3	3.652
5/8	1/4	3	3.856
3/4	3/8	3	4.048
7/8	3/8	3	4.050
1-1/8	3/4	3	4.395
1-3/8	1	3	4.592
1-5/8	1-1/4	3	4.834
1-7/8	1-1/2	3	5.102
2-1/8	-	3	5.468
2-3/8	2	3	5.504
2-5/8	-	4	5.885
2-7/8	2-1/2	4	6.080
3-1/8	-	4	6.372
3-1/2	3	4	6.795
3-5/8	-	4	6.760
4-1/8	3-1/2	4	7.204
4-1/2	4	4	7.738
5-1/2	5	4	8.686
6-5/8	6	4	9.872
8-5/8	8	4	11.976
10-3/4	10	4	14.000
12-3/4	12	4	16.000

Nominal 2" Wall			
Aerofix ID (inches)	IPS (inches)	Length (inches)	Aerofix OD (inches)
5/8	1/4	3	4.826
3/4	3/8	3	4.844
7/8	1/2	3	4.994
1-1/8	3/4	3	5.258
1-3/8	1	3	5.518
1-5/8	1-1/4	3	5.726
1-7/8	1-1/2	3	5.958
2-1/8	-	3	6.176
2-3/8	2	3	6.556
2-5/8	-	4	6.762
2-7/8	2-1/2	4	7.026
3-1/8	-	4	7.332
3-1/2	3	4	7.727
3-5/8	-	4	7.756
4-1/8	3-1/2	4	8.292
4-1/2	4	4	8.682
5-1/2	5	4	9.710
6-5/8	6	4	10.755
8-5/8	8	4	12.750
10-3/4	10	4	14.970
12-3/4	12	4	17.000

232 Industrial Park Road Sweetwater, TN 37874
 866.237.6235
 www.aeroflexusa.com

060123