



AEROFLEX®

Pipe Insulation Glueless Seam Seals



Cel-Link II®

Patented

Glueless Seam Seals for Aerocel®
Stay Seal® with Protape® SSPT™
Pre-Slit Pipe Insulation





Cel-Link II[®]

Glueless Seam Seals

HVAC | Refrigeration | VRF | Chilled Water
Hot & Cold-Water Piping

Aeroflex Cel-Link II is a high strength, low VOC, fast and easy-to-apply method for joining the transverse seams (butt joints) between sections of Aerocel[®] Stay-Seal[®] with Protape[®] (SSPT[™]) EPDM elastomeric pipe insulation.

Aeroflex Cel-Link II uses a specially formulated, acrylic adhesive engineered to perform in low/high-temperature environments and is designed for applying Aerocel insulation materials in conditions where wet-applied contact adhesive methods cannot be used - as low as 0°F (-18°C).

Aeroflex Cel-Link II is included in cartons of Aerocel SSPT pipe insulation for thicknesses ranging from 1/2" through 2" and ID's from 1/4" to 10" IPS.

Superior performance

Saves time when compared to wet-applied Aerocel adhesives

Strong peel adhesion & tensile strength

Installation temperatures down to 0°F (-18°C)

Zero-perm (when covered with Protape[®])

Safe for interior and exterior environments

Superior fire safety - 25/50-rated

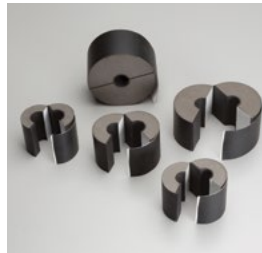
Indoor Advantage[™] Gold Certified for low chemical emissions

Verified Environmental Product Declaration (EPD)

No CFC's, HFC's, HCFC's, PBDE's, nitrosamine or fibers



Aeroflex insulation system solutions



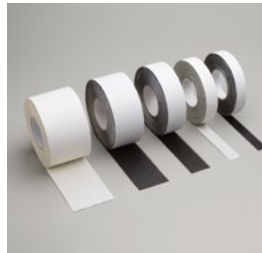
Aerofix[®]

Light-weight, rigid pipe supports, pre-insulated with closed-cell EPDM foam rubber and encased with zero-perm EPDM polymer membrane. Includes built-in pressure sensitive Protape[®] closure system.



AeroFit[™]

Pre-fabricated fitting covers made of closed-cell EPDM rubber for fast installation on HVAC and plumbing piping.



Protape[®]

Zero-perm, EPDM-based, self-adhering rubber tape for sealing adjoining seams and termination points.



Aeroflex Adhesives

Specially formulated adhesives for bonding and vapor-sealing Aerocel insulation. Fast tack and LVOC formulations available.



Aerocoat[™]

Premium insulation coating specially formulated for Aerocel EPDM insulation to provide UV protection for exterior applications and as a decorative finish.

Product: High-strength, acrylic self-adhering, glueless seam seals for bonding transverse seams of Aerocel® Stay-Seal® with Protape® pre-slit pipe insulation.

Installation Instructions: www.aeroflexusa.com/wp-content/uploads/2021/06/Aeroflex_Installation-Guide_062521-1.pdf

Physical and Operational Properties

| Property | Test Value/Rating | Test Method |
|-----------------------------------------------|-------------------------------------|-------------------------------|
| Fire Response Characteristics | 15-Flame Spread / 0-Smoke Developed | ASTM E 84 |
| Peel Adhesion | 50 oz./inch | ASTM D 3330 |
| Quick Stick | 19 oz./inch | PSTC 5 |
| Water Penetration Rate, gm/hr·m ² | 0 | ASTM D 3816 |
| Water Vapor Penetration, gm/hr·m ² | 0 | ASTM D 3816 |
| Minimum Installation Temperature | 0°F (-18°C) | Internal |
| Continuous Service Temperature Range | -50°F to 257°F (-45°C to 125°C) | Internal |
| Accelerated Aging, 80% RH, 150°F | No Release | ASTM D 3611 |
| Tensile Strength | No Separation, >72 hrs. | Suspended Load, 2.2 Lbs.(1kg) |

¹ AEROCEL flexibility begins to decrease at -70°F and below. This does not impact the insulating properties of the material.

Additional Approvals, Certifications & Compliance

| | |
|------------------------------------------|---------------------------------------------------------------------------------------------------------|
| ANSI/ASHRAE/ICC/USGBC/IES Standard 189.1 | International Green Construction Code® (igCC®) |
| ANSI/ASHRAE/IES Standard 90.1 | Energy Standard for Buildings Except Low-Rise Residential Buildings |
| CA Title 24 | California Building Energy Efficiency Standards |
| CDPH Specification 01350 | California Department of Public Health (VOC Emissions) |
| EPA TSCA Section 6(h) | Toxic Substances Control Act Persistent, Bioaccumulative, and Toxic (PBT) Chemicals |
| IECC® | International Energy Conservation Code® |
| LEED® | U.S. Green Building Council - Leadership in Energy and Environmental Design |
| REACH | European Chemicals Agency (ECHA) - Registration, Evaluation, Authorization and Restriction of Chemicals |
| RoHS | European Union - Restriction of Hazardous Substances |

Potential LEED® Credit Contributions

| | |
|-----------------------------------|------------------------------------------------------------------------------------------------------------------------------------|
| Energy & Atmosphere (EA) | Prerequisite: Minimum Energy Performance Credit: Optimize Energy Performance |
| Materials & Resources (MR) | Credit: Building Product Disclosure and Optimization - Environmental Product Declarations (EPD), Product Specific Type III |
| Indoor Environmental Quality (EQ) | Credit: Low-Emitting Materials Credit: Indoor Air Quality Assessment Credit: Thermal Comfort Credit: Acoustic Performance |
| Innovation (IN) | Credit: Occupant Comfort Survey |





282 Industrial Park Road Sweetwater, TN 37874
423.337.2493 Fax: 423.337.7675 Toll Free: 866.AEROCEL
www.aeroflexusa.com

080222