



**AEROFLEX®**

Protective/Decorative Coating for EPDM Insulation

# Aerocoat LVOC™

Low-VOC Coating for  
Aerocel® EPDM Insulation





# Aerocoat LVOC™

Low-VOC content and emissions  
Best choice for LEED® and Living Building Challenge (LBC) projects

HVAC | Refrigeration | VRF | Chilled Water Ductwrap | Hot & Cold-Water Piping

Low-VOC, water-based coating for Aerocel® EPDM insulation. Provides a decorative finish on interior installations, adds UV protection and code compliance for exterior applications.

U.S. energy codes require mandatory shielding of pipe insulation in exterior environments. Coatings such as Aerocoat LVOC are compliant; adhesive tapes alone are not.

Sizes: 1-gallon containers (White)

## Fast, simple to install

Ready to apply right out of the container (no diluting or tinting recommended)

Two coats required to achieve 100% coverage

## Superior performance

Protects Aerocel® insulation from environmental factors such as solar radiation, moisture, wind, equipment maintenance

UV and water-retardant

Designed to expand and contract with insulation

Blends in with white roofs

Prolongs life expectancy of insulation

## Safe for indoor & outdoor environments

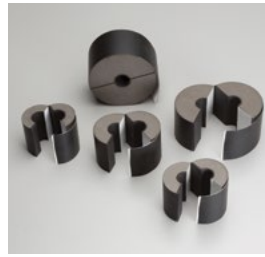
Low-VOC content and emissions

Indoor Advantage™ Gold Certified for low chemical emissions

Complies with LEED® VOC requirements for interior-applied and exterior-applied coatings

Does not contain LBC Red List chemicals

## Aeroflex insulation system solutions



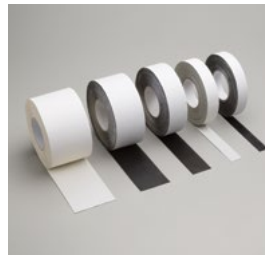
### Aerofix®

Light-weight, rigid pipe supports, pre-insulated with closed-cell EPDM foam rubber and encased with zero-perm EPDM polymer membrane. Includes built-in pressure sensitive Protape® closure system.



### AeroFit™

Pre-fabricated fitting covers made of closed-cell EPDM rubber for fast installation on HVAC and plumbing piping.



### Protape®

Zero-perm EPDM-based, self-adhering rubber tape for sealing glued insulation seams and termination points.



### Aeroflex Adhesives

Specially formulated adhesives for bonding and vapor-sealing Aerocel insulation. Fast tack and LVOC formulations available.

**Product:** White, low-VOC, water-based coating specially formulated to protect Aerocel insulation for interior and exterior applications.

**Application:** If Aeroseal or Aeroseal LVOC™ Black adhesive was dry to the touch prior to contact, Aerocoat LVOC™ may be applied immediately after installation. For Aerocel REF 1520™ adhesive, refer to data sheet for required dry times. Before applying make sure insulation surfaces are clean and free from oil, grease, dust or loose portions of any previous coating. Stir Aerocoat thoroughly and apply with brush or roller to the clean surface. No primer is required. Apply 2 coats allowing a minimum of 4 hours drying time (75°F, 70% RH) before applying second coat. Dilution or tinting of coating is not recommended due to negative impact on product performance. Recommended application ambient temperature is 50°F (10°C) to 100°F (38°C). Full cure time is 24 hours.

**Clean Up:** Clean Water

### Physical Properties

Composition	Water-based
Solids Content	Approximately 55% by weight
Net Weight	11 lbs/gal
Appearance	Low-Gloss
VOC	Content < 50 g/L, Emissions < 50 g/L
Red List Chemicals	Zero
Fungi Resistance	Excellent
Flammability	Non-flammable
Coverage	Up to 300 ft2/gal
Application	Brush or roller
Dry Time	Minimum of 4 hours between coats (75°F, 70% RH)
Reapply	3-5 years
Shelf Life	1 year (store at room temperature, avoid freezing)

### Additional Approvals, Compliances, Etc.

ANSI/ASHRAE/IES Standard 90.1	Energy Standard for Buildings Except Low-Rise Residential Buildings
IECC®	International Energy Conservation Code®
ANSI/ASHRAE/ICC/USGBC/IES Standard 189.1	International Green Construction Code® (igCC®)
CA Title 24	California Building Energy Efficiency Standards
MEA #171-04-M	City of New York Material and Acceptance Pipe Insulation
CDPH Standard Method v1.2	Low Emitting Materials, Interior Paints & Coatings
SCAQMD Rule 1113	Architectural Coatings, LEED® for Healthcare and Schools
Materials Red List	International Living Future Institute (ILFI) Living Building Challenge (LBC) standard

### Potential LEED® Credit Contributions

Indoor Environmental Quality (EQ)	Credit: Low-Emitting Materials, Interior and Exterior-Applied Coatings
-----------------------------------	--





282 Industrial Park Road Sweetwater, TN 37874  
423.337.2493 Fax: 423.337.7675 Toll Free: 866.AEROCEL  
[www.aeroflexusa.com](http://www.aeroflexusa.com)

080222